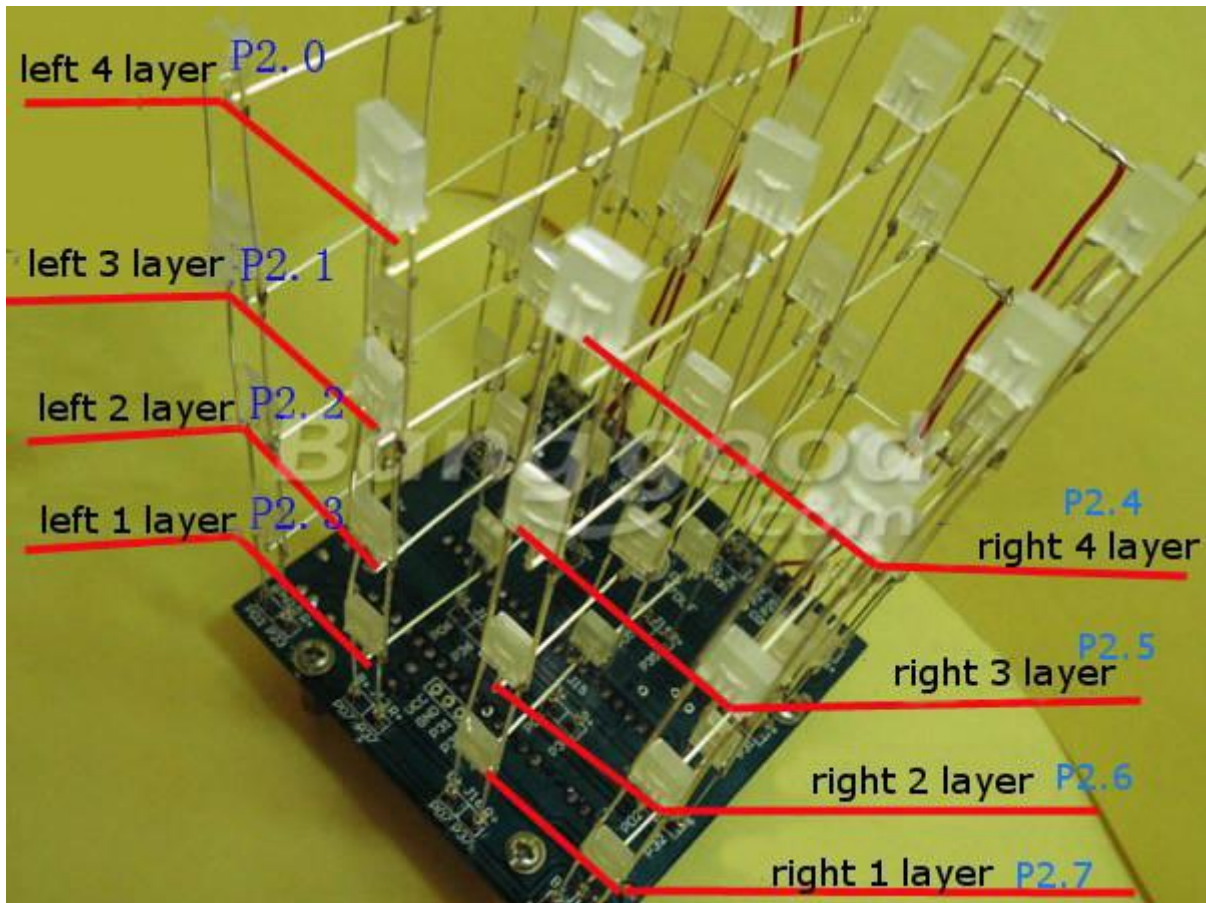


How to welding:

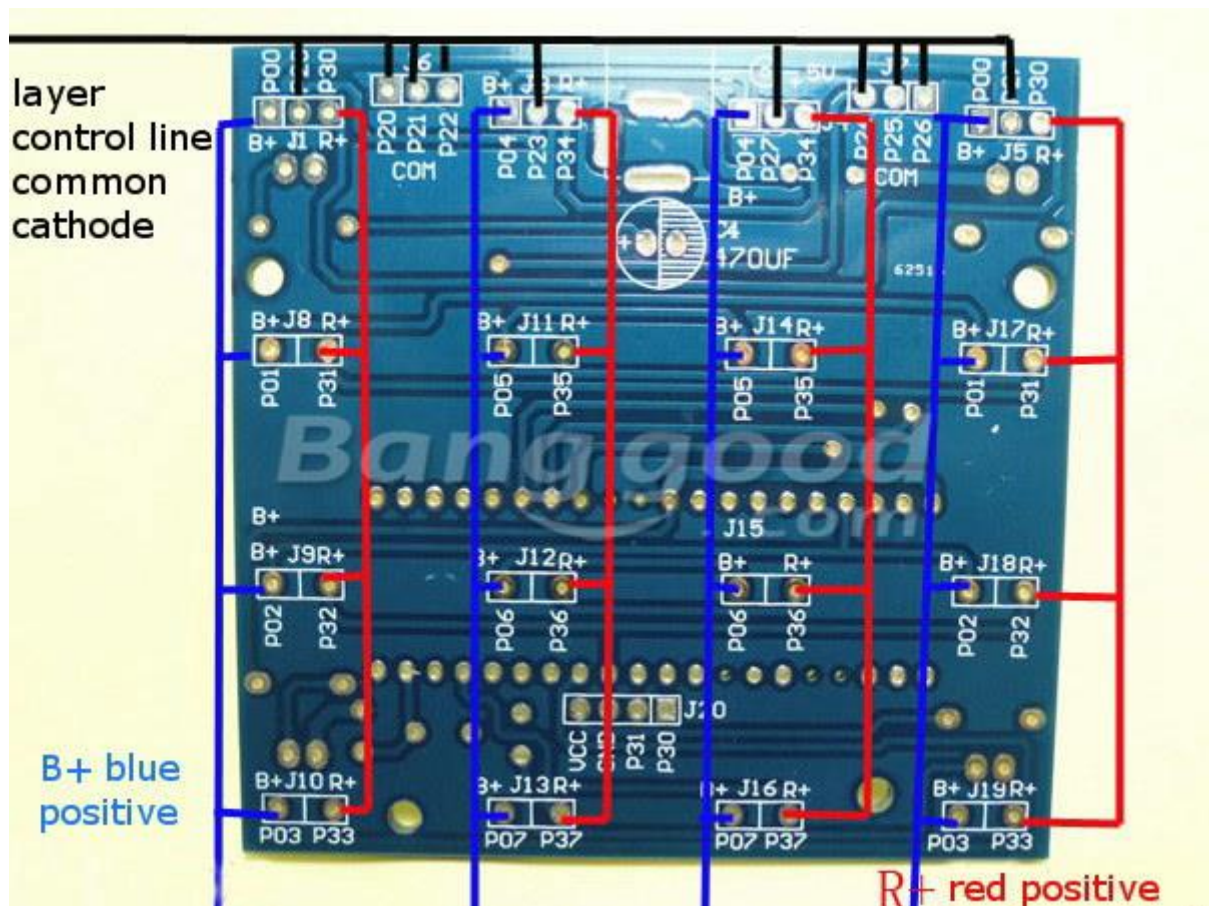
This kit is using beams and layer of common anode common cathode connection.

Layer connection:



P2.0-P2.7 is layer control line, we first divided this cube into left and right two sides, each measuring 2 LED cathode connected together as a layer. The left side of the topmost (i.e. Layer 4) of the common cathode layer control line is P2.0, common cathode layer control line of the second layer on the left is P2.1, common cathode layer control line of the third layer on the left is P2.2, the left side of the fourth layer (that is the bottom) the common cathode layer control line is P2.3, the right side of the top level (that is, on the 4th layer) the common cathode layer control line is P2.4, the right side third layer common cathode layer control line is P2.5, the common cathode layer control line on the right side second layer is P2.6, the right side of the first layer (ie lowest) common cathode layer control line is P2.7.

Beam connection:



Wiring of beam is more classic, as shown above, on the left side of each female on the board wrote B+ is the cathode of blue LED in double color kit, R+ is the cathode of red LED in double color kit (BUT if you buy the single LED cube, that is the LED positive electrode)